



Building with conscience.

Sto[®] GPS Board

Rigid Graphite Polystyrene Insulation Board

Facades



Sto GPS Board is a rigid, graphite-enhanced, 100% closed cell expanded polystyrene insulation board. It provides R4.7 per inch of thermal resistance at 75°F and is recyclable. Sto GPS Board does not contain fluorocarbon blowing agents. As a result, it has excellent long-term R-value stability, low global warming potential and zero ozone depletion potential. Sto GPS Board can be used as part of StoTherm[®] ci GPS, StoTherm[®] ci MVES and StoPowerwall[®] ci wall systems.

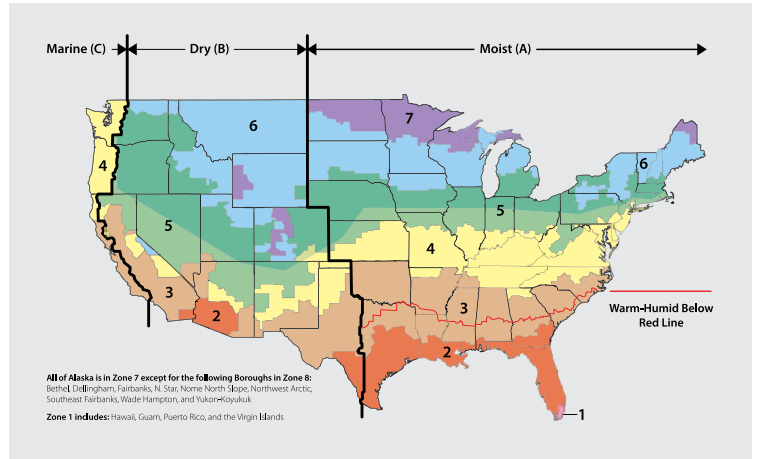


Sto GPS Board excels in hot, wet, and cold climates

The thermal resistance of the Sto GPS Board gets better as temperatures drop. It is rated at R4.7 per inch at 75°F per ASTM C578; at 40°F, it attains R4.9 per inch.

In addition, the closed-cell Sto GPS Board is moisture vapor semi-permeable. This allows a board that has been in contact with water to dry out, helping preserve high insulation performance and facilitating moisture egress from wall systems.

Sto GPS Board is available in thicknesses that meet ASHRAE 90.1 prescriptive requirements for continuous exterior insulation in all climate zones. This helps project teams meet thermal code requirements while controlling cost and minimizing wall thickness.



ASHRAE 90.1 Prescriptive ci Requirements for Residential Construction

Climate Zone	Mass Wall	Metal Building	Wood-Framed	Steel-Framed
1	R5.7	R9.8	N/A	N/A
2	R7.6	R9.8	N/A	R7.5
3	R9.5	R13	R3.8ci or R20	R7.5
4	R11.4	R19	R3.8ci or R20	R7.5
5	R13.3	R19	R5 or R7.5	R10
6	R15.2	R19	R5 or R7.5	R12.5
7	R15.2	R22.1	R5 or R7.5	R15.6
8	R19	R25	R18.8	R18.8

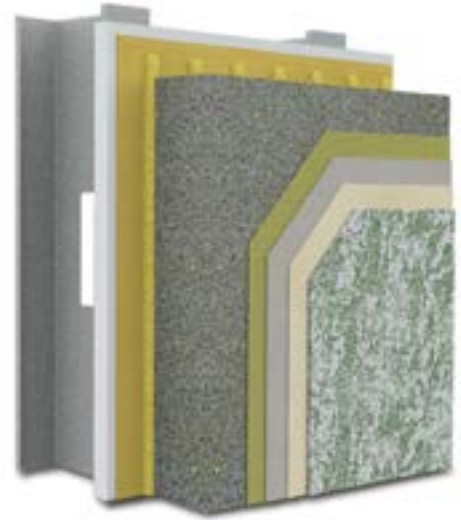
ASHRAE 90.1 Prescriptive ci Requirements for Non-Residential Construction

Climate Zone	Mass Wall	Metal Building	Wood-Framed	Steel-Framed
1	NA	R9.8	N/A	N/A
2	R5.7	R9.8	N/A	R3.8
3	R7.6	R9.8	N/A	R5.0
4	R9.5	R15.8	R3.8ci or R20	R7.5
5	R11.4	R19	R5 or R7.5	R10
6	R13.3	R19	R5 or R7.5	R12.5
7	R15.2	R22.1	R5 or R7.5	R15.6
8	R19	R25	R18.8	R18.8



Sto GPS Board for StoTherm® ci GPS

- Sto GPS Board is available in 2' x 4' board size with a variety of thicknesses to provide compliance with ASHRAE 90.1-2019 prescriptive continuous insulation requirements.
- Minimum R4.7 per inch thermal resistance at 75°F gives design professionals new options for exterior wall configurations. Walls can be made thinner with equal thermal resistance, creating a larger interior for a given building footprint. Or wall thickness can remain the same, and thermal resistance can be substantially increased.
- From a sustainability perspective, increasing thermal resistance is an easy decision. Very little additional material is needed, and the cost difference is negligible. The payoff is reduced building energy consumption, better building operating economics, and reduced emission of greenhouse gases.
- StoTherm ci GPS does not require the use of mechanical fasteners, which puncture the underlying air and water-resistive barrier and can compromise thermal efficiency due to thermal bridging.



StoTherm ci GPS with
StoSignature® Rough 20 Color partial

Scan QR code to learn more about
StoTherm ci GPS or visit
www.stocorp.com/stootherm-ci-gps





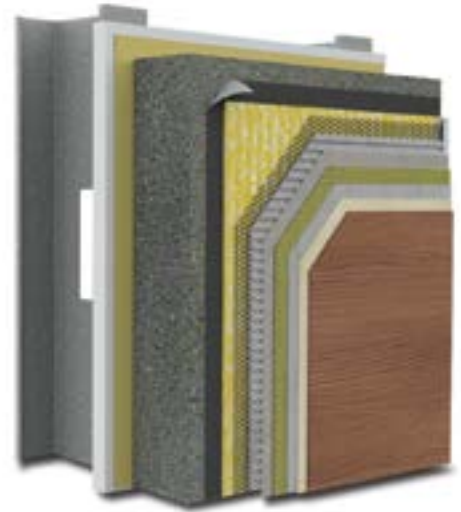
Sto GPS Board	2' X 4' Board Size			
	Thickness	Pieces per Pallet	SF per Pallet	R-Value
81854-725	1-1/16"	90	720	5.0
81854-726	1-1/4"	76	608	5.9
81854-727	1-3/4"	54	432	8.2
81854-728	2-1/4"	44	352	11
81854-729	2-1/2"	38	304	12
81854-730	2-3/4"	34	272	13
81854-731	3"	32	256	14
81854-732	3-1/2"	28	225	17
81854-733	4"	24	192	19
81854-734	5"	18	144	24
81854-735	6"	16	128	28
81854-736	7"	12	96	33
81854-737	8"	12	96	38
81854-738	1-1/2"	64	512	7.1
81854-739	2"	48	384	9.4



Sto GPS Board for StoPowerwall® ci

Sto GPS Board is available in 4' x 8' board size to optimize installation efficiency for insulated stucco walls. Thickness is limited to a maximum of 2 1/8" by mechanical factors specific to insulated stucco wall systems. Within this thickness constraint, Sto GPS Board provides R10.1 thermal resistance, meeting or exceeding most ASHRAE 90.1 prescriptive requirements in Climate Zones 1 - 3.

The moisture vapor semi-permeability of the Sto GPS Board helps control the inward vapor drive from stucco cladding. Used with a vapor permeable StoGuard air and water-resistive barrier system, it creates a wall system that combines excellent moisture resistance with drying capability.



StoPowerwall ci GPS

Scan QR Code to learn more about StoPowerwall ci systems, or visit www.stocorp.com/stucco



Sto GPS Board	4' X 8' Board Size			
	Thickness	Pieces per Pallet	SF per Pallet	R-Value
81854-725	1-1/16"	90	1440	5.0
81854-726	2-1/8"	22	704	10

Sto GPS Board for StoTherm ci MVES

StoTherm ci MVES

Sto GPS Board is recommended for StoTherm ci MVES system, which feature thin brick, stone or tile exterior cladding.

StoTherm ci MVES seamlessly integrates with StoTherm ci GPS. The result is an exterior façade designed to meet aesthetic objectives combined with seamless continuous insulation. Further, insulation is backed with a secondary moisture drainage plane and a StoGuard air and water-resistive barrier system.



StoTherm ci MVES

Scan QR Code to learn more about Sto MVES systems, or visit www.stocorp.com/mves





The foundation for creativity

Inspiration favors the open mind. With Sto, let your creative exploration take you anywhere. Our proven products give you unmatched freedom and the ability to achieve your vision in any color, any form, any texture, any material.

Sto GPS Board offers added performance to most of Sto's Engineered wall systems, allowing for virtually limitless design flexibility. Durable and protective, it is compatible with multiple cladding options that can be seamlessly combined with continuous insulation that meets or exceeds code requirements. This high-performing insulation is versatile, sustainable, and thermal resistant. Through innovation, expertise, and a hyper focus on performance, Sto is there wherever your inspiration leads.

Creativity Begins. **Sto Finishes**



Sto Americas

Sto Corp.
3800 Camp Creek Pkwy
Building 1400, Suite 120
Atlanta, GA 30331
USA

Phone 1-800-221-2397
www.stocorp.com

ATTENTION

Sto products are intended for use by qualified professional contractors, not consumers, as a component of a larger construction assembly as specified by a qualified design professional, general contractor or builder. They should be installed in accordance with those specifications and Sto's instructions. Sto Corp. disclaims all, and assumes no, liability for on-site inspections, for its products applied improperly, or by unqualified persons or entities, or as part of an improperly designed or constructed building, for the nonperformance of adjacent building components or assemblies, or for other construction activities beyond Sto's control. Improper use of Sto products or use as part of an improperly designed or constructed larger assembly or building may result in serious damage to this product, and to the structure of the building or its components. **STO CORP. DISCLAIMS ALL WARRANTIES EXPRESSED OR IMPLIED EXCEPT FOR EXPLICIT LIMITED WRITTEN WARRANTIES ISSUED TO AND ACCEPTED BY BUILDING OWNERS IN ACCORDANCE WITH STO'S WARRANTY PROGRAMS WHICH ARE SUBJECT TO CHANGE FROM TIME TO TIME.** For the fullest, most current information on proper application, clean-up, mixing and other specifications and warranties, cautions and disclaimers, please refer to the Sto Corp. website, www.stocorp.com.